

# QUAD<sup>®</sup>

ONE 4 ALL

## QUAD CANNON

### Q-2222



**Equipment Dimensions** ▲  
pp. 03

**Specifications** ▲  
pp.03

**Wiring Diagram** ▲  
pp.04



**Fenix Product Copyrights** This price List and the mentioned Fenix products include or describe copyrighted Fenix material. Laws in the United States and other countries preserve for Fenix Industries and its licensors certain exclusive rights for copyrighted material, including the exclusive right to copy, reproduce in any form, distribute and make derivative works of the copyrighted material. Accordingly, any copyrighted material of Fenix and its licensors contained herein or in the Fenix products described in this Price List may not be copied, reproduced, distributed, merged or modified, transmitted, transcribed, stored in retrieval system or translated into any language or computer language, in any form or by any means, without prior written permission of Fenix Industries, Inc. Fenix and the stylized Fenix logo are registered in the U.S. Patent & Trademark Office.



# SAFETY REGULATIONS & WARRANTY

## Safety Regulations

The following provides all the information necessary to safely operate the previously listed products of Feniex Industries, Inc. Please read this manual thoroughly before installing or operating your new product in order to prevent any damage or injury. Failure to follow the listed instructions in this manual may result in damage to your products or personal injury.

- Proper installation of this product requires good knowledge of automotive systems, electronics and procedures.
- Please guarantee all vital components of the vehicle are not in danger of being damaged by drilling holes necessary for installation. Check all sides of the mounting surface before drilling any holes into the vehicle.
- Do not install this product in any way that interferes with the deployment of the air bag. Doing so may damage the effectiveness of the air bag and can lead to serious personal and vehicle injury. The installer will assume full responsibility of proper installation of the new unit.
- Please clean the mounting surface before installation of the unit when using tape, brackets, magnet, Velcro or suction cups.
- The product's ground wire must be connected directly to the Negative (-) battery post for effective use of the unit. Please follow all wiring guidelines provided to guarantee long lifespan and productivity. Failing to follow these instructions may result in damage to the product.

## Warranty

Feniex Industries' speakers, sirens, rocker panels, AM600 Beacons, Torch Lights, AI lightbars, AI Cubes, AM900 Work Lights and controllers are warranted for 2 years from the manufacturing date. In addition, all other products are warranted for 5 years from the manufacturing date.

If a warranty problem occurs, please contact customer support at 1.800.615.8350 or visit the web site at [www.Feniex.com](http://www.Feniex.com). If the product needs to be returned for repair or replacement, call our customer support line to receive a return merchandise authorization number.

Operational times are from 10 a.m. to 5 p.m. central time, Monday through Friday. Please do not send in product without contacting support first for a RMA number.

## Service After Expiration

Feniex Industries will still provide service for all products after expiration of the warranty. For any issues, call the customer support line. In some instances it may be necessary for the product to be shipped, freight prepaid and insured for loss or damage to Feniex headquarters.

**Warning!** Utilizing non-factory screws and mounting brackets may result in loss of warranty coverage.

## Copyright

This instruction manual and the Feniex products described in this instruction manual may include or describe copyrighted Feniex material. Laws in the United States and other countries preserve for Feniex Industries and its licensors certain exclusive rights for copyrighted material, including the exclusive right to copy, reproduce in any form, distribute and make derivative works of the copyrighted material. Accordingly, any copyrighted material of Feniex and its licensors contained herein or in the Feniex products described in this instruction manual may not be copied, reproduced, distributed, merged or modified in any manner without the express written permission of Feniex Industries, Inc.

## Feniex Product Copyrights

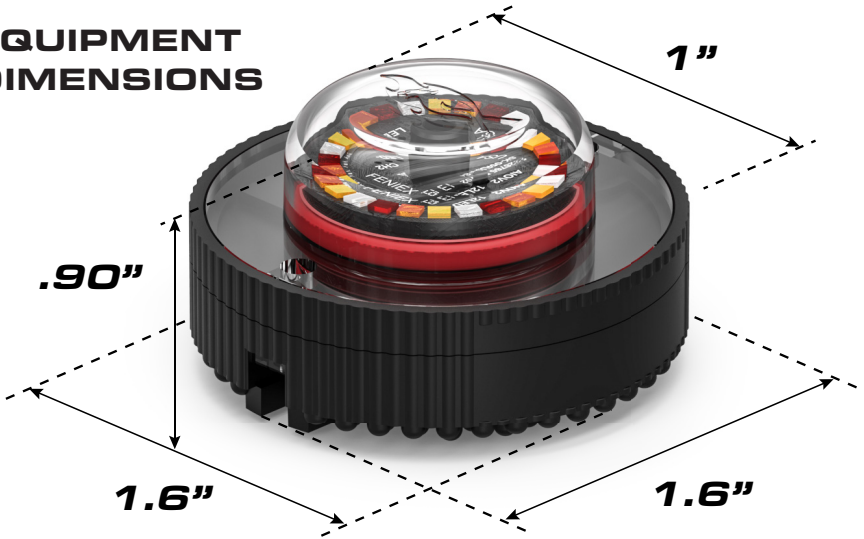
The products described in this document are the property of Feniex Industries, Inc. It is furnished by express license agreement only and may be used only in accordance with the terms of such an agreement. Products and documentation are copyrighted materials. Making unauthorized copies is prohibited by law. No part of the product or documentation may be reproduced, transmitted, transcribed, stored in retrieval system or translated into any language or computer language, in any form or by any means, without prior permission from Feniex Industries, Inc.



## ▲ SPECIFICATIONS

Dimensions	1" x 1" x 1.6"
Warranty	5 years
Voltage	10-18 Volts DC
Current Draw	1 Amp

## EQUIPMENT DIMENSIONS



### Fenix University

Watch our instructional videos at Fenix University to see an in-depth look at our product's features and functions.



Use the link below:

[fenixuniversity.com](http://fenixuniversity.com)



## ▲ CANNON 360 LENS ADD-ONS

Changing the 120° lens to the 360° lens.

- 360° lens

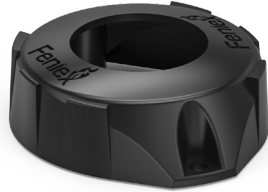


The Cannon has the 120° lens installed when sold. To remove the 120° lens and replace it with the 360° lens and reflector, follow the steps listed below:

1. Remove the 120° lens by pushing the tabs on each side of the bottom of the LED heatsink towards the center of the Cannon with a flat screwdriver. The lens will gently pop off. *Do not remove the o-ring from the heatsink.*
2. Place the chrome reflector over the screw head, ensuring that the center hole of the reflector covers the screw head.
3. Place the supplied o-ring on top of the chrome reflector.
4. Add the 360° lens to the assembly, by pushing the tabs on each end of the lens through the heatsink. *Be sure the tabs engage the heatsink.*

## ▲ CANNON BEZEL ADD-ON

- Surface mount bezel



The Cannon surface mount bezel fits both the 120° lens and the 360° lens options.

## ▲ WIRING DIAGRAM

Wire:	Function:
Red	12V+, Mode 1
Black	12V-, Ground
Yellow	12V+, Mode 2
White	12V+, Mode 3
Green	12V+, Color Change
Blue	12V-, Sync/Pattern

### Syncing Flash Patterns

1. Connect the blue sync wire(s) of the Quad product(s) you would like to sync.
2. Hold the blue sync wire to 12V-ground for 3 seconds. The flash pattern will reset to "single-slow".
3. Momentarily tap the blue wire to 12V- ground to cycle the flash patterns.

### Alternating Flash Patterns

1. Connect the blue sync wire(s) of the Quad product(s) you would like to set as leader or follower.
2. Hold the blue sync wire to 12V-ground for 3 seconds. The light(s) will turn a steady blue for leader and red for follower.

### Setting Colors

1. Hold the green sync wire to 12V+ positive for 3 seconds. The light(s) will turn steady blue.
2. Momentarily tap the green wire to 12V+ positive to cycle the colors.

## ▲ PATTERNS

Order: Flash Pattern:

1	Single Slow
2	Single Fast
3	Single Combo
4	Dual Slow
5	Dual Fast
6	Dual Combo
7	Triple Slow
8	Triple Fast
9	Triple Combo
10	Attack 1
11	Attack 2
12	Break Pop
13	Tail 10%
14	Steady On 100%

## ▲ LOCKING AND UNLOCKING PATTERN SELECT AND COLORS

Once both pattern and color is set to the desired settings for all 3 modes you can lock and unlock the color and pattern with the below instructions. This locking will disable the blue wire for color change and the green wire for pattern change. The blue wire can still be used to sync the modules once the locking is enabled.

### ■ Enabling Locking Features:

1. Attach ground to the black wire.
2. Twist Mode 1 (Red wire), Mode 2 (Yellow Wire), Mode 3 (White Wire), and Color Change (Green wire) together. Then apply 12V+ to them for 10 seconds.
3. After 10 seconds you should see the module light up Amber. After the Amber light turns off the module is locked and the user cannot change pattern or color on all modes.
4. Remove 12V+ from the wires listed in Step 2 and untwist all of them.
5. The locked unit is now ready to use.

### ■ Disabling Locking Features:

1. Attach ground to the black wire.
2. Twist Mode 1 (Red wire), Mode 2 (Yellow Wire), Mode 3 (White Wire), and Color Change (Green wire) together. Then apply 12V+ to them for 10 seconds.
3. After 10 seconds you should see the module light up White. After the White light turns off the module is unlocked and the user can now change pattern or color on all modes again.
4. Remove 12V+ from the wires listed in Step 2 and untwist all of them.
5. The unlocked unit is now ready to use.