



FENIEX // 2018 // INSTRUCTION MANUAL
WEB // www.fenixindustries.com

HAMMER[®]

FEEL THE NOISE



S-3017

INSTRUCTION MANUAL



Fenix Product Copyrights This price List and the mentioned Fenix products include or describe copyrighted Fenix material. Laws in the United States and other countries preserve for Fenix Industries and its licensors certain exclusive rights for copyrighted material, including the exclusive right to copy, reproduce in any form, distribute and make derivative works of the copyrighted material. Accordingly, any copyrighted material of Fenix and its licensors contained herein or in the Fenix products described in this Price List may not be copied, reproduced, distributed, merged or modified, transmitted, transcribed, stored in retrieval system or translated into any language or computer language, in any form or by any means, without prior written permission of Fenix Industries, Inc.. Fenix and the stylized Fenix logo are registered in the U.S. Patent & Trademark Office.



Safety Regulations & Warranty 3

 Service after Expiration 3

 Copyright 3

 Fenieux Product Copyright 3

Box Contents..... 4

 Vehicle Specific Brackets 4

Specifications, Tones, & Wiring..... 5

 Specifications 5

 Siren Tones 5

 Equipment Dimensions 5

 Wiring Diagram 5

 Siren Tone Selection 5

Wiring & Installation..... 6

 Wiring Instructions 6

 Installation Notes 6

Bracket Mounting Instructions..... 7

SAFETY REGULATIONS & WARRANTY



SAFETY REGULATIONS

The following provides all the information necessary to safely operate the previously listed products of Feniex Industries, Inc. Please read this manual thoroughly before installing or operating your new product in order to prevent any damage or injury. Failure to follow the listed instructions in this manual may result in damage to your products or personal injury.

- Proper installation of this product requires good knowledge of automotive systems, electronics & procedures.
- Please guarantee all vital components of the vehicle are not in danger of being damaged by drilling holes necessary for installation. Check all sides of the mounting surface before drilling any holes into the vehicle.
- Do not install this product in any way that interferes with the deployment of the air bag. Doing so may damage the effectiveness of the air bag & can lead to serious personal and vehicle injury. The installer will assume full responsibility of proper installation of the new unit.
- Please clean the mounting surface before installation of the unit when using tape, brackets, magnet, Velcro or suction cups.
- The product's ground wire must be connected directly to the negative (-) battery post for effective use of the unit. Please follow all wiring guidelines provided to guarantee long lifespan & productivity. Failing to follow these instructions may result in damage to the product.

WARRANTY

Feniex Industries, Inc. warrants to the original purchaser that the product shall be free from defects in material & workmanship for 5 years from the date of purchase for all LED products. Feniex Industries warranties speakers, sirens, flashers, & controllers for 2 years.

If warranty service is needed, please contact customer support:

Phone: 1.800.615.8350

Web Site: www.Feniex.com/support

Email: techsupport@feniex.com

If the product needs to be returned for repair or replacement, contact our customer service team (using any method listed above) to receive a Return Merchandise Authorization (RMA) number. Operational times are from 9 a.m. to 6 p.m. central time, Monday through Friday.

 Please do not send in product without contacting support first for a Return Merchandise Authorization (RMA) number.

CONDITIONS

Feniex Industries, Inc. will not be held responsible for any costs associated with equipment removal and/or re-installation resulting from a warranty claim. It is the sole responsibility of the party initiating a warranty claim to pay shipping charges associated with returning a product to Feniex Industries for repair or replacement.

SERVICE AFTER EXPIRATION

Feniex Industries will still provide service for all products after expiration of the warranty. For any issues, call the customer support line. In some instances it may be necessary for the product to be shipped, freight prepaid and insured for loss or damage to Feniex headquarters.



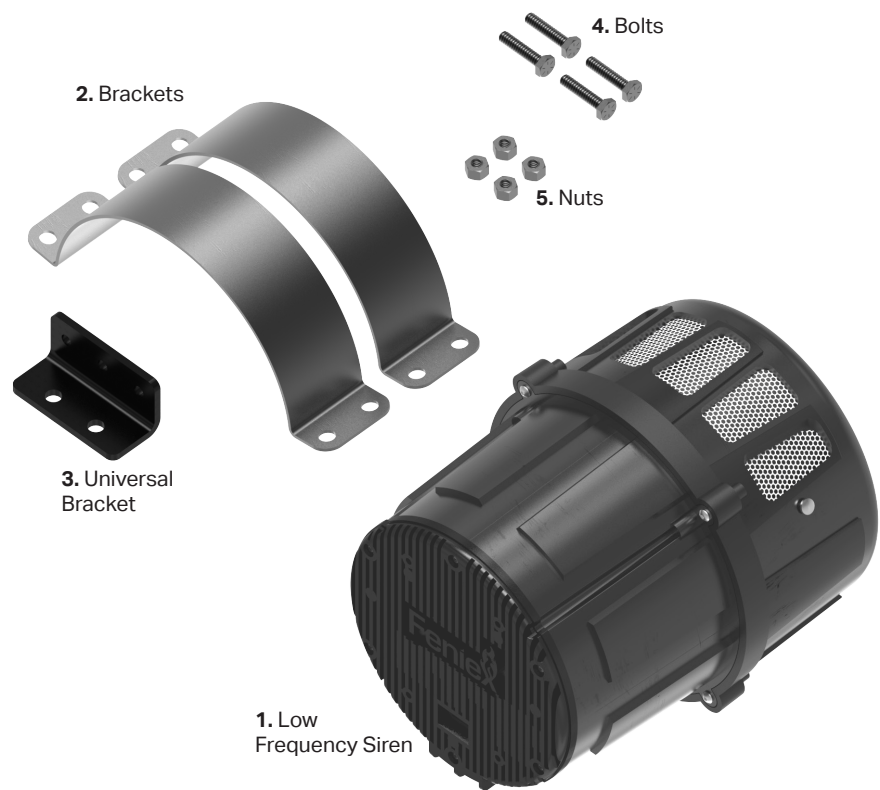
Utilizing non-factory screws and mounting brackets may result in the loss of warranty coverage.

COPYRIGHT

This instruction manual and the Feniex products described in this instruction manual may include or describe copyrighted Feniex material. Laws in the United States and other countries preserve for Feniex Industries and its licensors certain exclusive rights for copyrighted material, including the exclusive right to copy, reproduce in any form, distribute and make derivative works of the copyrighted material. Accordingly, any copyrighted material of Feniex and its licensors contained herein or in the Feniex products described in this instruction manual may not be copied, reproduced, distributed, merged or modified in any manner without the express written permission of Feniex Industries, Inc.

FENIEX PRODUCT COPYRIGHTS

The products described in this document are the property of Feniex Industries, Inc. It is furnished by express license agreement only and may be used only in accordance with the terms of such an agreement. Products and documentation are copyrighted materials. Making unauthorized copies is prohibited by law. No part of the product or documentation may be reproduced, transmitted, transcribed, stored in retrieval system or translated into any language or computer language, in any form or by any means, without prior permission from Feniex Industries, Inc.



BOX CONTENTS	QUANTITY	VEHICLE SPECIFIC BRACKETS*	MODELS
1. Low Frequency Siren	1	Ford Explorer (PIU)	2016+
2. Brackets	2	Ford Taurus (PIS)	2013+
3. Universal Bracket	1	Chevy Tahoe & Suburban	2015+
4. Bolts	4	Dodge Charger	2015+
5. Nuts	4	*Sold Separately	

SPECIFICATIONS, TONES, & WIRING

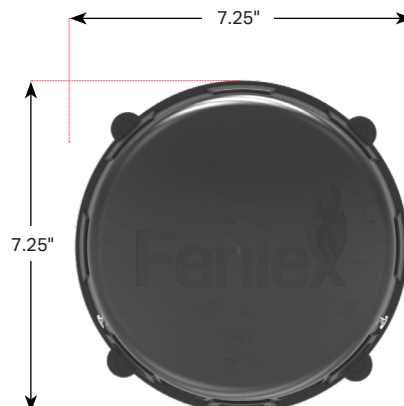
SYSTEM SPECIFICATIONS

Input Power	12VDC
Current Draw	8.5 Amps
External Fuse	125% of Circuit Load
Sound Output	100 Watts
Frequency Response	182Hz - 1KHz
Decibels	115dB
Fuse	Onboard Fuse
Weight	7.5lbs
Dimensions	7.25" W x 7.25" L x 9.25" H
IP Rating	IP67
Tones	7 Integrated Siren Tones
Warranty	2 Years

SIREN TONES

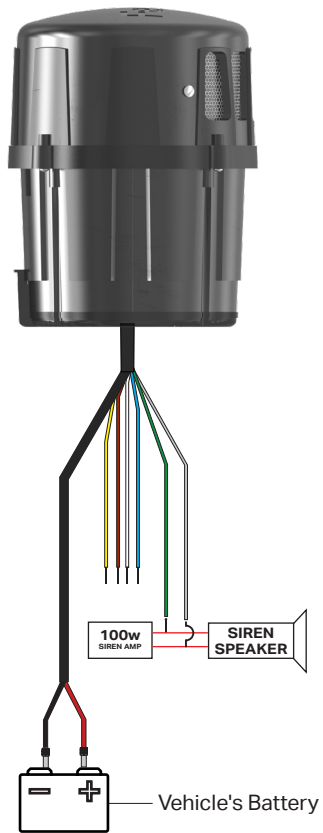
Silent / Remote Siren	Wail
Phaser	Mechanical
Yelp	Hi-Lo
P-Call Slow	Hammer

MOUNTING INSTRUCTIONS



SPECIFICATIONS, TONES, & WIRING

WIRING DIAGRAM



COLOR	FUNCTION	CONNECTION
■ Black	Ground / 12v (-)	Chasis Ground
■ Red	Battery / 12v (+)	Positive Battery Terminal
■ Yellow	Mode 1 / 12v (+)	Switch/Controller
■ Brown	Mode 2 / 12v (+)	Switch/Controller
■ White	Park Kill / 12v (+)	Park-Kill Signal
■ Green	Speaker	Siren output to speaker**
■ Gray	Speaker	Siren output to speaker**
■ Blue	Tone Select / 12v (+)	Momentary Switch

**Not polarity dependent



The Hammer is loud and can be harmful to your hearing. Hearing protection is recommended when testing this product.

WIRING INSTRUCTIONS

- 1) Connect the red 12v (+) wire to the positive terminal of the vehicle's battery. Ground the 12v (-) black wire or connect it to the 12v (-) terminal of the vehicle's battery.
- 2) Connect the yellow wire for mode 1 and brown wire for mode 2 to individual latching switches.
- 3) This unit can function as a standalone speaker utilizing internal tones or it can utilize tones from an external siren:

3a) If connecting to an external siren, connect the green wire & gray wires to the speaker output wires from the siren amplifier. These connections are not polarity dependant.

3b) If utilizing the internal siren tones, simply apply power to the yellow wire for mode 1 or brown wire for mode 2 to activate the selected tone (see page 4 for steps to change internal siren tones).

INSTALLATION NOTES

- 1) To rebroadcast tones from an existing remote siren, apply 12v (+) to the yellow wire (mode 1) on the Hammer and it will rebroadcast the remote siren's tones in low frequency mode. Out of the box, the Hammer's mode 1 is defaulted to a "silent tone" for use with external siren amplifiers. There is a silent tone available for mode 2 if desired (see page 4 for steps to change internal siren tones).
- 2) To use the internal tones of the Hammer without the use of an external siren, simply activate mode 1 or mode 2 (see below for steps to change internal siren tones).



If the Hammer is connected to an external siren amplifier and detects an active siren tone, it will always override the internal tones on the Hammer. This behavior will occur in both mode 1 and mode 2.

SIREN TONE SELECTION

- 1) Connect the Siren to the battery, attaching the red 12v (+) wire to the positive terminal of the vehicle's battery. Ground the black wire or connect it to the 12v (-) terminal of the vehicle's battery.
- 2) Connect the mode wire you would like to program to the positive terminal of the vehicle's battery.
- 3) Momentarily tap the Tone Changer wire (blue) to the positive terminal to change tones.



The Hammer will only broadcast internal and/or external tones for 60 seconds at a time.

MOUNTING

MOUNTING INSTRUCTIONS



For best results, the front of the unit should be facing forward and the speaker grille should be facing downward. Sideward facing mounting is also possible with the speaker grille facing downward.

UNIVERSAL BRACKET ASSEMBLY

1) Place the L-bracket on the intended mounting surface. Mark the hole placement of the 2 hole brackets.



! Attach the speaker to a secure area of the vehicle that can support the weight . Do not drill into any parts that may have wiring or might tamper with the functionality of the vehicle.

2) Use the provided C-brackets to attach the L-bracket to the side of the Hammer. Use the provided bolts and nuts to secure the brackets around the Hammer.

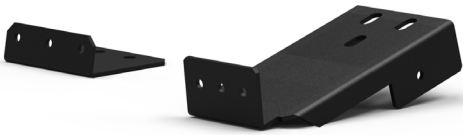
3) Once secured, place the Hammer on the intended mounting surface.

4) Drill the 3 holes marked in step 1 for the bracket.

5) Secure the Hammer and brackets to the mounting surface.

6) Route the wires away from any sharp edges and follow the wiring diagram on page 9.





HAMB-001: Charger



HAMB-002: Tahoe / Suburban



HAMB-004: Taurus (PIS)



HAMB-005: Explorer (PIU)



HAMB-006: Universal

