

AM600



BN-0118

INSTRUCTION MANUAL

Fenix Product Copyrights This price List and the mentioned Fenix products include or describe copyrighted Fenix material. Laws in the United States and other countries preserve for Fenix Industries and its licensors certain exclusive rights for copyrighted material, including the exclusive right to copy, reproduce in any form, distribute and make derivative works of the copyrighted material. Accordingly, any copyrighted material of Fenix and its licensors contained herein or in the Fenix products described in this Price List may not be copied, reproduced, distributed, merged or modified, transmitted, transcribed, stored in retrieval system or translated into any language or computer language, in any form or by any means, without prior written permission of Fenix Industries, Inc.. Fenix and the stylized Fenix logo are registered in the U.S. Patent & Trademark Office.



Safety Regulations & Warranty	3
Service after Expiration	3
Copyright	3
Feniex Product Copyright	3
Specifications, Tones, & Wiring	4
Box Content	4
Dimensions	4
Pipe Mount	4
Magnet Mount	4
Mount Kit Part Numbers	4
Specifications, Patterns, & Wiring	5
System Specifications	5
Flash Patterns	5
Wiring Diagram	5
Power	5
Synchronization	5
Pattern Selection	5
Mounting Instructions	6
Permanent Mount	6
Pipe Mount	6
Magnet Mount	6

SAFETY REGULATIONS & WARRANTY



SAFETY REGULATIONS

The following provides all the information necessary to safely operate the previously listed products of Feniex Industries, Inc. Please read this manual thoroughly before installing or operating your new product in order to prevent any damage or injury. Failure to follow the listed instructions in this manual may result in damage to your products or personal injury.

- Proper installation of this product requires good knowledge of automotive systems, electronics & procedures.
- Please guarantee all vital components of the vehicle are not in danger of being damaged by drilling holes necessary for installation. Check all sides of the mounting surface before drilling any holes into the vehicle.
- Do not install this product in any way that interferes with the deployment of the air bag. Doing so may damage the effectiveness of the air bag & can lead to serious personal and vehicle injury. The installer will assume full responsibility of proper installation of the new unit.
- Please clean the mounting surface before installation of the unit when using tape, brackets, magnet, Velcro or suction cups.
- The product's ground wire must be connected directly to the negative (-) battery post for effective use of the unit. Please follow all wiring guidelines provided to guarantee long lifespan & productivity. Failing to follow these instructions may result in damage to the product.

WARRANTY

Feniex Industries, Inc. warrants to the original purchaser that the product shall be free from defects in material & workmanship for 5 years from the date of purchase for all LED products. Feniex Industries warranties speakers, sirens, flashers, & controllers for 2 years.

If warranty service is needed, please contact customer support:

Phone: 1.800.615.8350

Web Site: www.Feniex.com/support

Email: techsupport@feniex.com

If the product needs to be returned for repair or replacement, contact our customer service team (using any method listed above) to receive a Return Merchandise Authorization (RMA) number. Operational times are from 9 a.m. to 6 p.m. central time, Monday through Friday.

 Please do not send in product without contacting support first for a Return Merchandise Authorization (RMA) number.

CONDITIONS

Feniex Industries, Inc. will not be held responsible for any costs associated with equipment removal and/or re-installation resulting from a warranty claim. It is the sole responsibility of the party initiating a warranty claim to pay shipping charges associated with returning a product to Feniex Industries for repair or replacement.

SERVICE AFTER EXPIRATION

Feniex Industries will still provide service for all products after expiration of the warranty. For any issues, call the customer support line. In some instances it may be necessary for the product to be shipped, freight prepaid and insured for loss or damage to Feniex headquarters.

 Utilizing non-factory screws and mounting brackets may result in the loss of warranty coverage.

COPYRIGHT

This instruction manual and the Feniex products described in this instruction manual may include or describe copyrighted Feniex material. Laws in the United States and other countries preserve for Feniex Industries and its licensors certain exclusive rights for copyrighted material, including the exclusive right to copy, reproduce in any form, distribute and make derivative works of the copyrighted material. Accordingly, any copyrighted material of Feniex and its licensors contained herein or in the Feniex products described in this instruction manual may not be copied, reproduced, distributed, merged or modified in any manner without the express written permission of Feniex Industries, Inc.

FENIEX PRODUCT COPYRIGHTS

The products described in this document are the property of Feniex Industries, Inc. It is furnished by express license agreement only and may be used only in accordance with the terms of such an agreement. Products and documentation are copyrighted materials. Making unauthorized copies is prohibited by law. No part of the product or documentation may be reproduced, transmitted, transcribed, stored in retrieval system or translated into any language or computer language, in any form or by any means, without prior permission from Feniex Industries, Inc.

BOX CONTENTS, DIMENSIONS, & MOUNTING OPTIONS

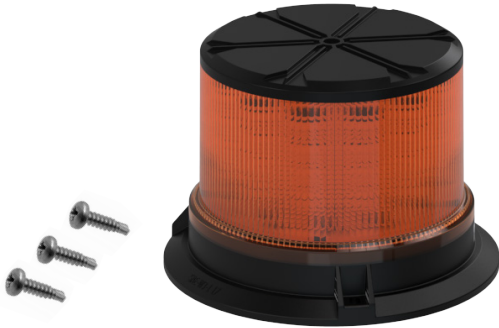


BOX CONTENTS

QUANTITY

- 1. Beacon, Permanent Mount
- 2. Screws, Self-Tapping

1
3



DIMENSIONS



PIPE MOUNT (1" NPT)



Using the hardware provided, secure the beacon to the pipe-mount adapter, feeding the wire down through the center of adapter plate. After making the appropriate wiring connections, feed the wire through the pipe and tighten the beacon onto the pipe. Tighten the adjustment nut to complete the installation.

MAGNET MOUNT



Using the hardware provided, secure the beacon to the magnet mount. Be sure to feed the wire through the formed opening before tightening the two components together.

! Magnetic mounts are not intended for high-speed use. Limit speed to 35MPH or less while magnet is attached to vehicle. For vehicles traveling over 35 MPH or with non-steel bodies, utilize the permanent mount option.

MOUNT KITS*	PART NUMBER
Pipe-Mount Kit (1" NPT)	BN-0118-PM*
Magnet Mount Kit	BN-0118-PM*
*Sold Separately	

SPECIFICATIONS, PATTERNS, & WIRING



SYSTEM SPECIFICATIONS

Input Power	12 - 24 VDC
Current Draw	2.5 Amps
External Fuse (if hard wired)	125% of Circuit Load
Power Output	20 Watts
Colors	Amber, Red, Blue, White, Green
SAE Certification	Class 1, J845
Flash Patterns	20
Dimensions	6.5" D x 4.4" H

FLASH PATTERNS

Single Flash [Slow]	Reverse Simulated Rotating [Slow]
Single Flash [Fast]	Reverse Simulated Rotating [Fast]
Double Flash [Slow]	3x Double Flash [Slow] > 3x Quint Flash [Slow]
Double Flash [Fast]	5x Double Flash [Fast] > 5x Quint Flash [Fast]
Triple Flash [Slow]	6x Sim. Rotating [Slow] > 4x Quint Flash [Slow]
Triple Flash [Fast]	8x Sim. Rotating [Fast] > 6x Quint Flash [Fast]
Quint Flash [Slow]	3x Triple Flash [Slow] > 3x Single Flash [Slow]
Quint Flash [Fast]	5x Triple Flash [Fast] > 5x Single Flash [Fast]
Simulated Rotating [Slow]	Combination #1: Patterns 1, 3, 5, 7, & 9 [Slow]
Simulated Rotation [Fast]	Combination #2: Patterns 2, 4, 6, 8, & 10 [Fast]

WIRING DIAGRAM



COLOR	FUNCTION	CONNECTION
■ Black	Ground	12v (-) Chassis Ground
■ Red	Battery	12v (+) Positive Battery Terminal
■ Yellow	Pattern/Sync	12v (+) Momentary Switch

POWER

1) Simply plug the cigarette lighter adapter into your vehicle's cigarette lighter outlet and turn on the power switch to activate the unit.

A) If hard-wiring the unit, cut cable 4" inches or more away from the cigarette lighter adapter to expose the red, yellow, & black wires.

B) Strip the wire jacketing back to expose the wire.

C) Extend the red wire to a 12v (+) post. Extend the black wire to a 12v (-) ground.

! The AM600 Beacon is bright & can be harmful to your vision. Wear protective glasses while looking directly at the product.

SYNCHRONIZATION

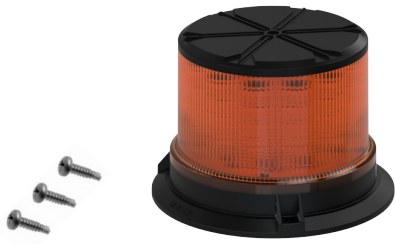
1) Tie the yellow wires from each beacon together to synchronize them. There is no master/slave functionality.

PATTERN SELECTION

1) Momentarily tap the Pattern Changer wire (yellow) to a 12v (+) positive terminal to change the pattern.

MOUNTING INSTRUCTIONS

PERMANENT MOUNT



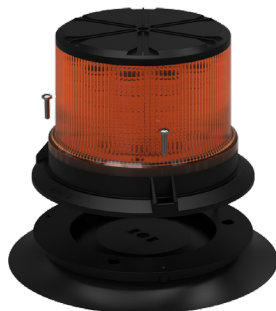
The beacon comes standard with a permanent mount flange attached. Simply use the 3 supplied screws to secure the beacon to your surface of choice. Be sure to route the wire accordingly prior to tightening the beacon to its surface.

PIPE MOUNT (1" NPT)



Using the hardware provided, secure the beacon to the pipe-mount adapter, feeding the wire down through the center of adapter plate. After making the appropriate wiring connections, feed the wire through the pipe and tighten the beacon onto the pipe. Tighten the adjustment nut to complete the installation.

MAGNET MOUNT



Using the hardware provided, secure the beacon to the magnet mount. Be sure to feed the wire through the formed opening before tightening the two components together.