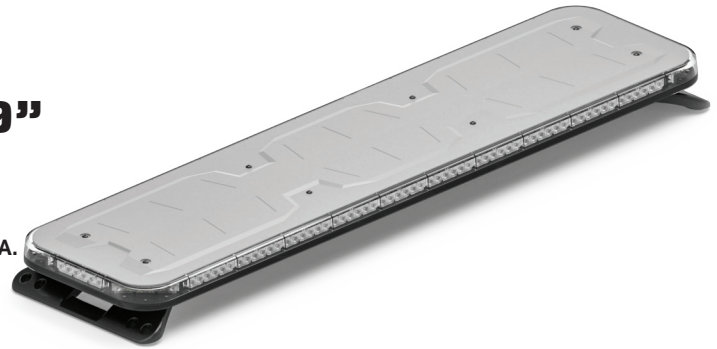




FUSION-S GPL 49" LIGHTBAR

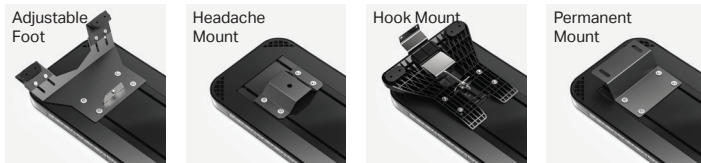
A. Fusion-S GPL 49" Lightbar

A.



PART NUMBER	DIMENSIONS	VOLTAGE	CURRENT DRAW	LED COLORS
A. FS-4918	1.6" x 11.8" x 49.2"	10-18 V DC	15 Amps	R B A W G

MOUNTING:



CERTIFICATIONS:



DESCRIPTION:

The Fenix Fusion-S is the next evolution of the Fusion series. It is the world's brightest and most competitively priced emergency warning line. User configurable in red, blue, amber, white, and green, the Fusion-S offers the user a new and improved 40-degree optic that is 60% brighter than the previous Fusion family. No lighting line can compare to the brightness and light performance of the Fusion-S series.

- Available in Single Colors: R, B, A, W, G
- 3 programmable priority flashing modes
- Multiple programmable modes:
 - Flood modes
 - Stop, tail & turn signal patterns
 - Cruise mode patterns
 - Traffic advisor modes
 - Cut-off modes
 - Dim modes
- 180x single color led count
- 16 programmable flash patterns
- Field servicable
- 40° optical light spread for long-range visibility
- 15' cable length
- Standard hook-mount supports 30+ vehicle makes & models

